

S T O N C R E T E



*[Here, two different
starting points, stone
and concrete, have*



*been combined
to create a highly
original and expertly
amalgamated
aesthetic and graphic
mixture.]*





STONCRETE

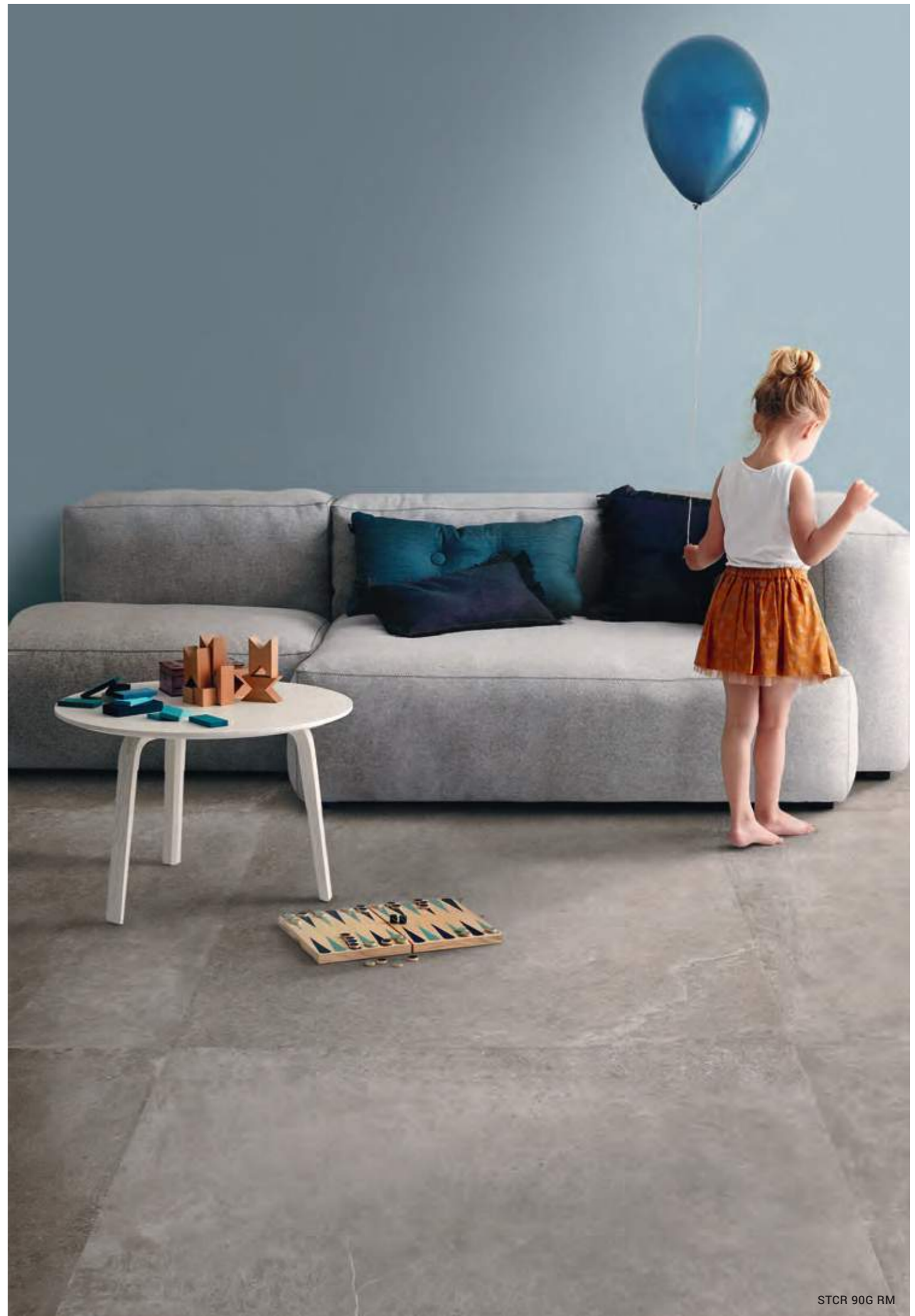
Two in one

Un gusto morbido e contemporaneamente forte che si addice sia a coloro che sono alla ricerca di una soluzione pietra non fortemente caratterizzata, sia per chi sta cercando un effetto cemento non banale.

Stoncrete volutamente si posiziona in un'area di gusto molteplice, da una parte la pietra e dall'altra il cemento, per rispondere a esigenze estetiche differenti, rappresentando così una soluzione adatta per più contesti, residenziali e non, garantendo una piena continuità tra indoor e outdoor.

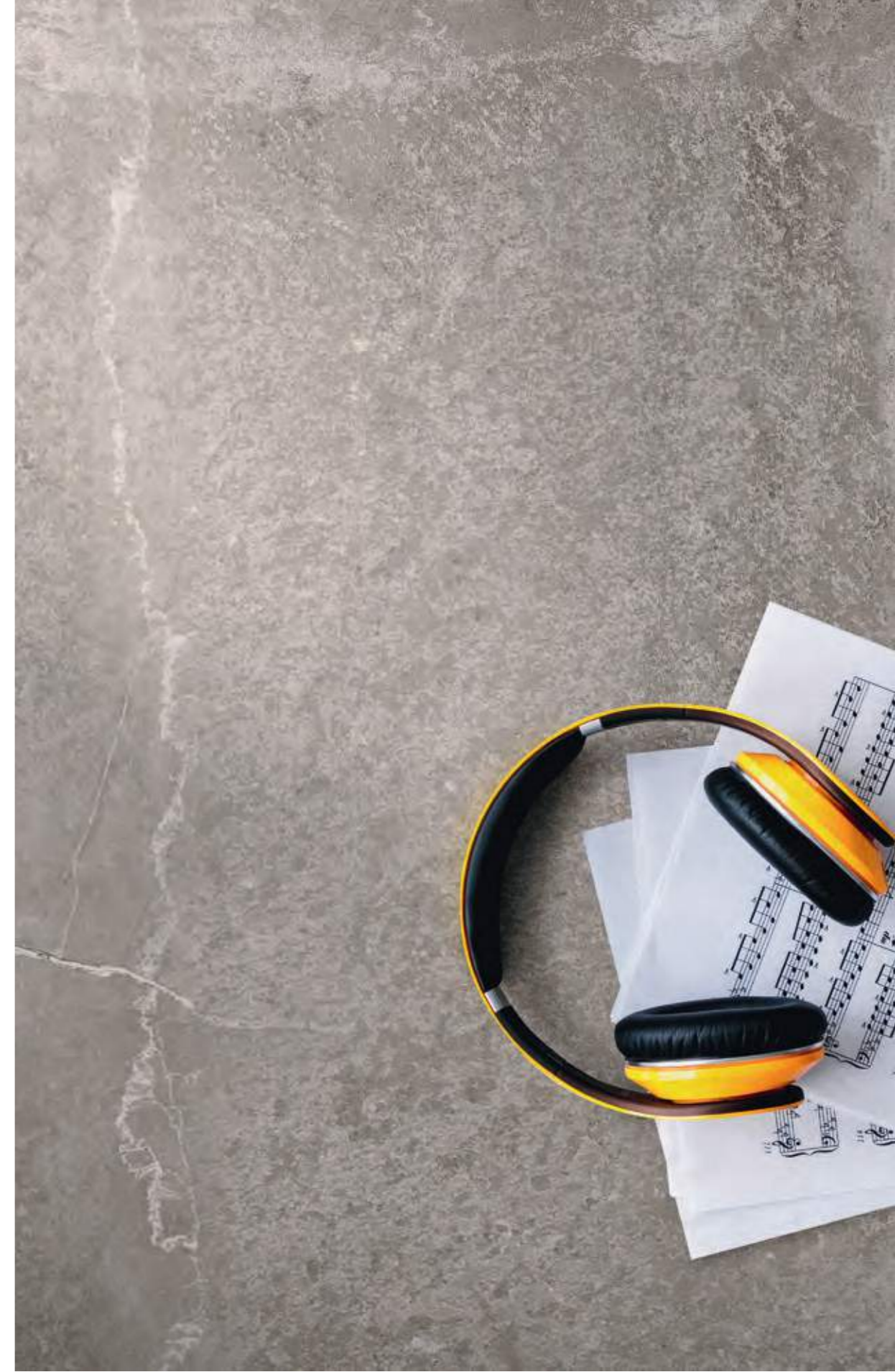
The resulting style is both gentle and strong, which makes it ideal for anyone looking for a subtle stone solution or an original concrete effect.

Stoncrete is deliberately positioned in a multiple taste area that includes both stone and, concrete, in order to meet different style requirements. This makes it a solution that can adapt to a wide range of residential and non-residential contexts as well as guaranteeing complete continuity between indoors and outdoors.





STCR 12G RM
STCR R60G RM



STCR 12G RM



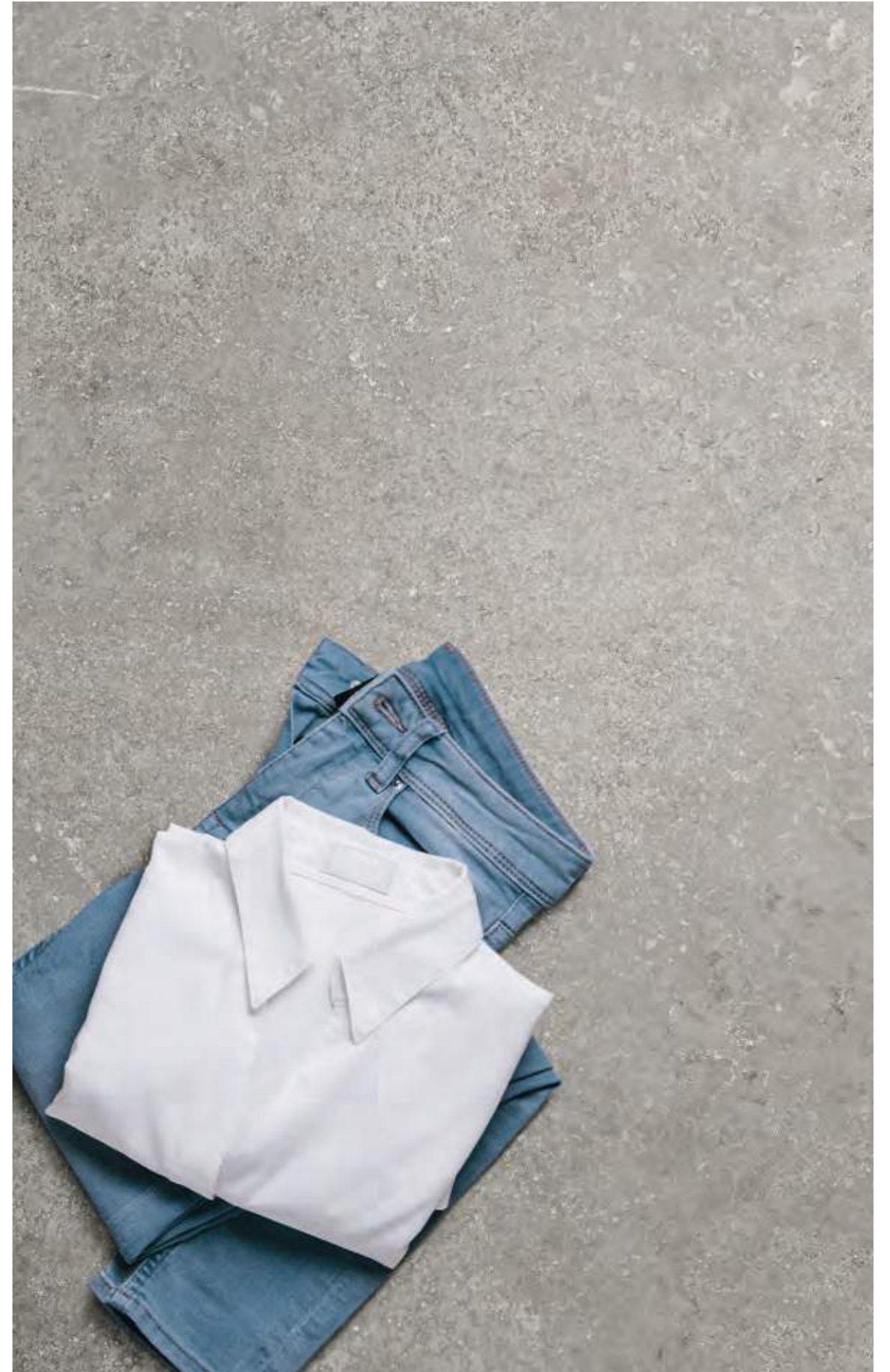


STCR2 90AG RM





STCR 90AG RM



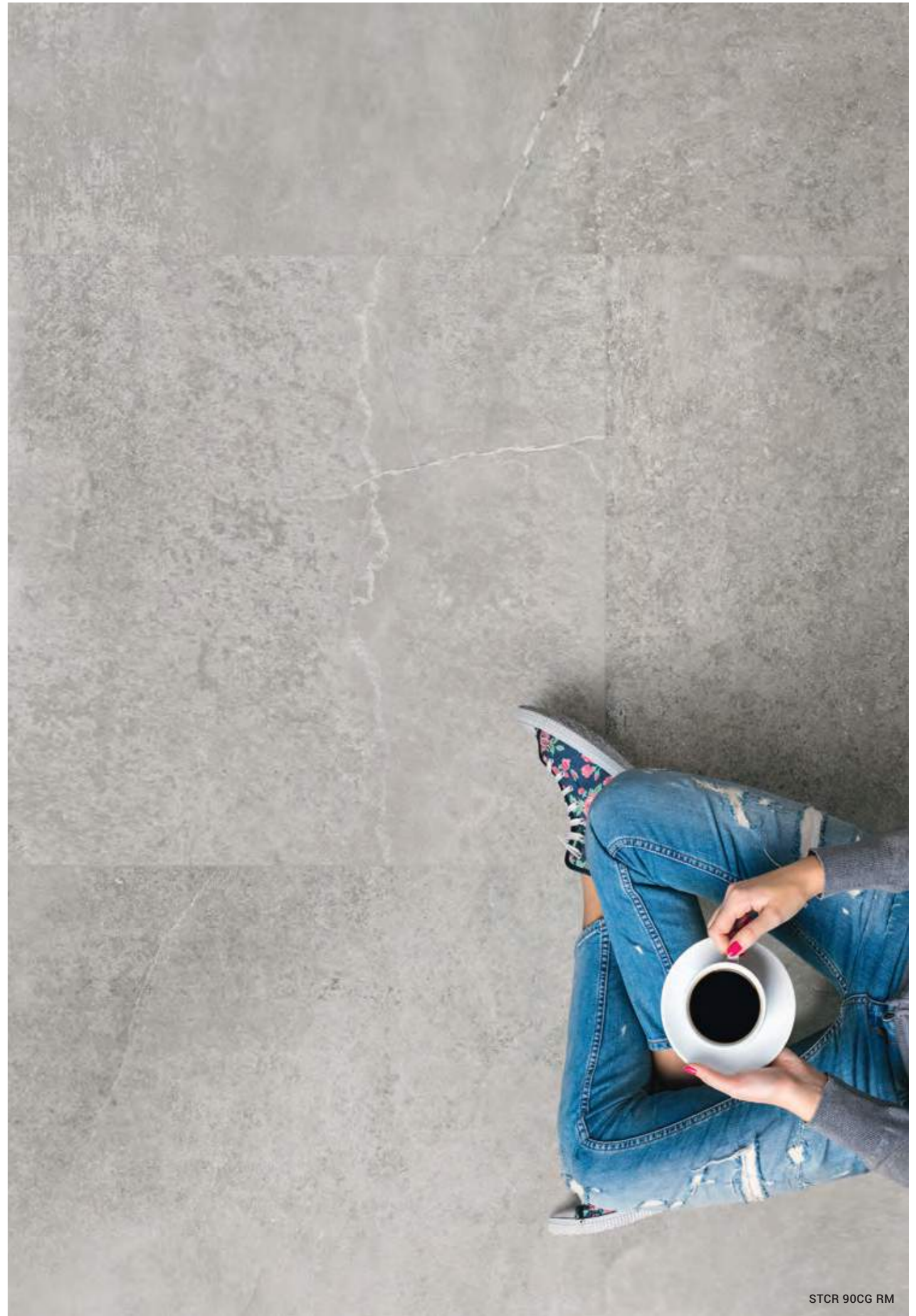
STCR 12AG RM



STCR DK12CG / RAME L0,5x15



STCR 12AG RM / STCR 12G RM













STCR 90DG RM

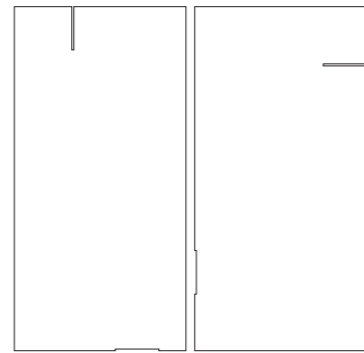
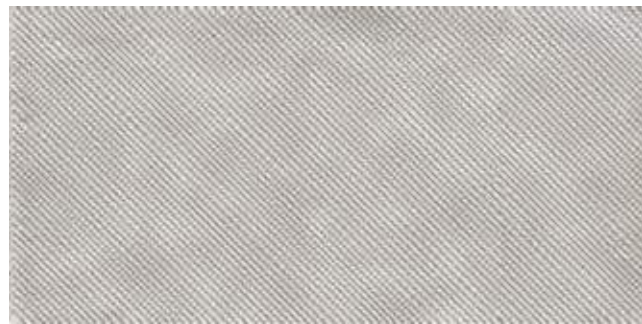


STCR 12DG RM



STONCRETE

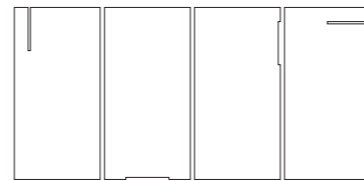
GRES PORCELLANATO A MASSA COLORATA
COLOURED BODY PORCELAIN TILE



TITANIO L0,5X15 Δ
0,5X15-0,2"X6"

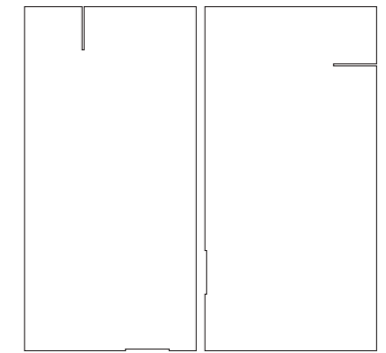
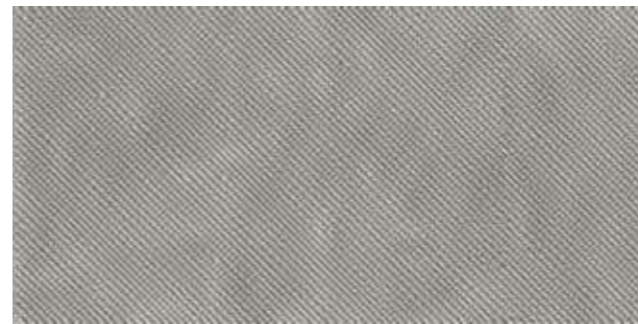
STCR DK12CG
60X120-24"X48"

OTTONE L0,5X15 Δ
0,5X15-0,2"X6"



RAME L0,5X15 Δ
0,5X15-0,2"X6"

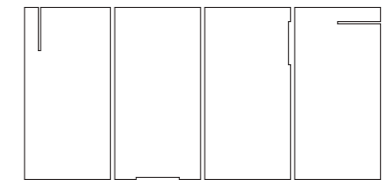
STCR DK36CG
30X60-12"X24"



TITANIO L0,5X15 Δ
0,5X15-0,2"X6"

STCR DK12AG
60X120-24"X48"

OTTONE L0,5X15 Δ
0,5X15-0,2"X6"

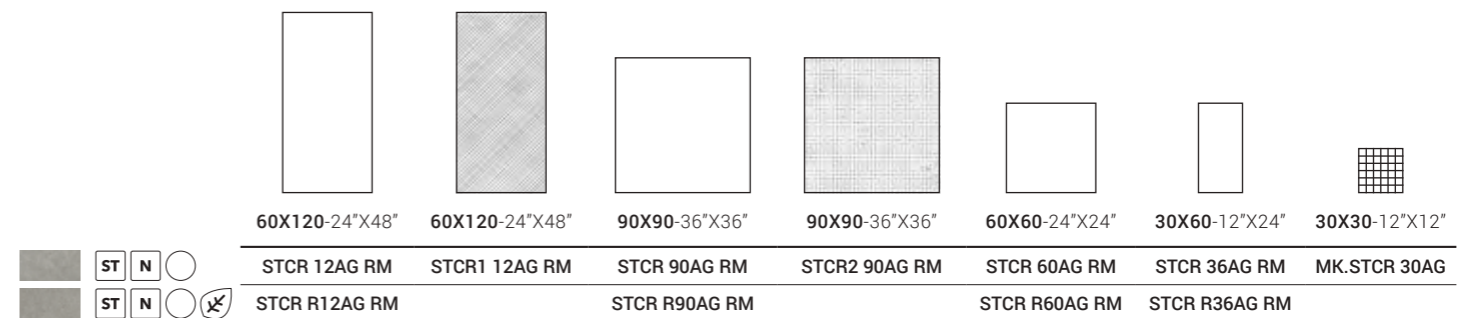
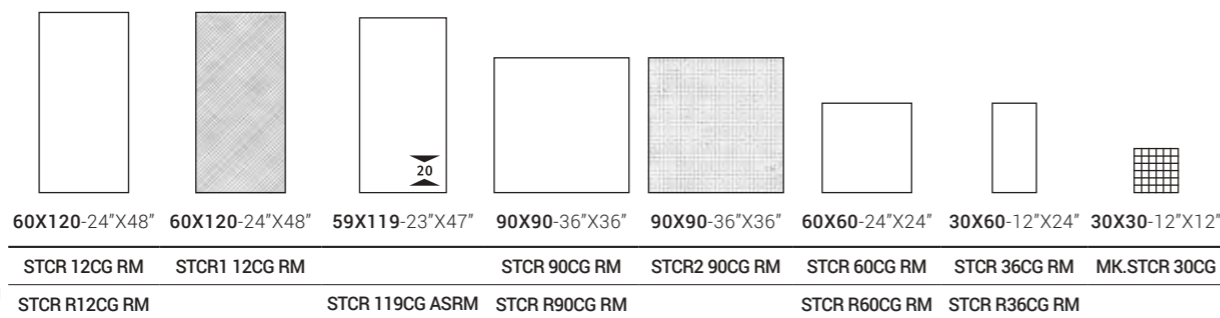


RAME L0,5X15 Δ
0,5X15-0,2"X6"

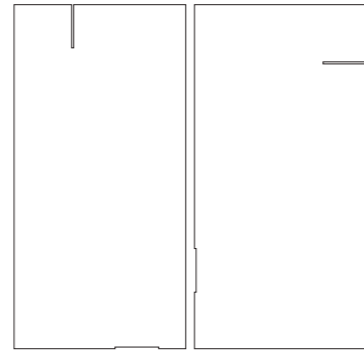
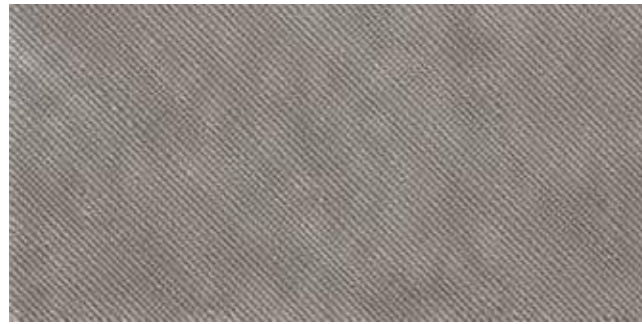
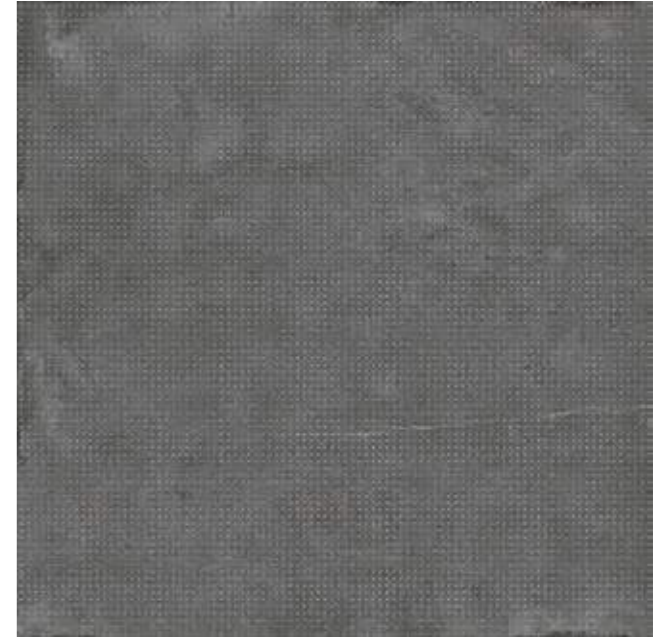
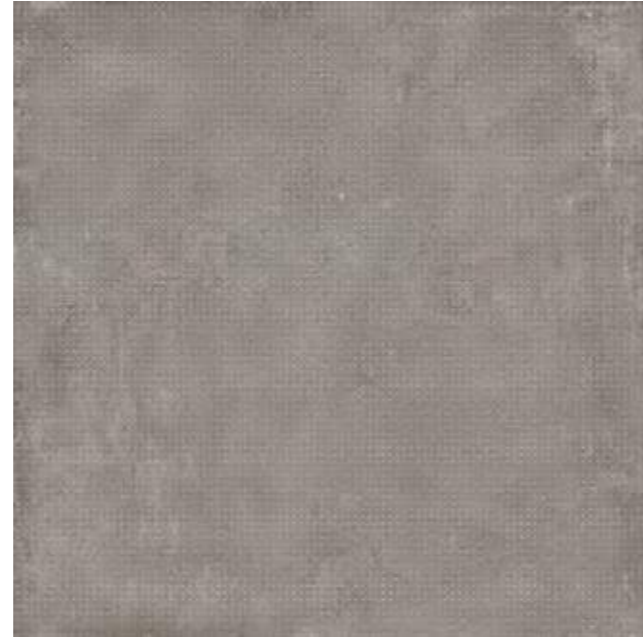
STCR DK36AG
30X60-12"X24"

CG

AG



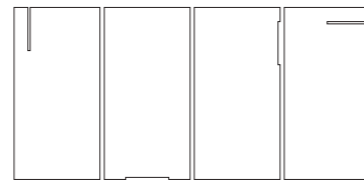
GRES PORCELLANATO A MASSA COLORATA
COLOURED BODY PORCELAIN TILE



TITANIO L0,5X15 Δ
0,5X15-0,2"X6"

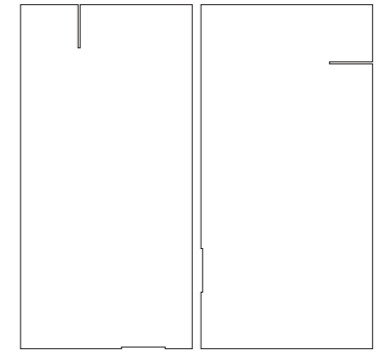
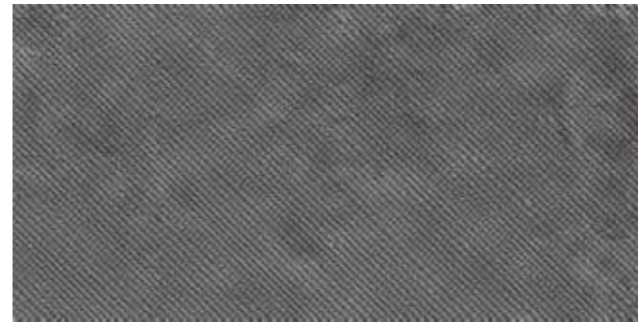
STCR DK12G
60X120-24"X48"

OTTONE L0,5X15 Δ
0,5X15-0,2"X6"



RAME L0,5X15 Δ
0,5X15-0,2"X6"

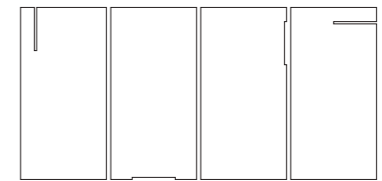
STCR DK36G
30X60-12"X24"



TITANIO L0,5X15 Δ
0,5X15-0,2"X6"

STCR DK12DG
60X120-24"X48"

OTTONE L0,5X15 Δ
0,5X15-0,2"X6"

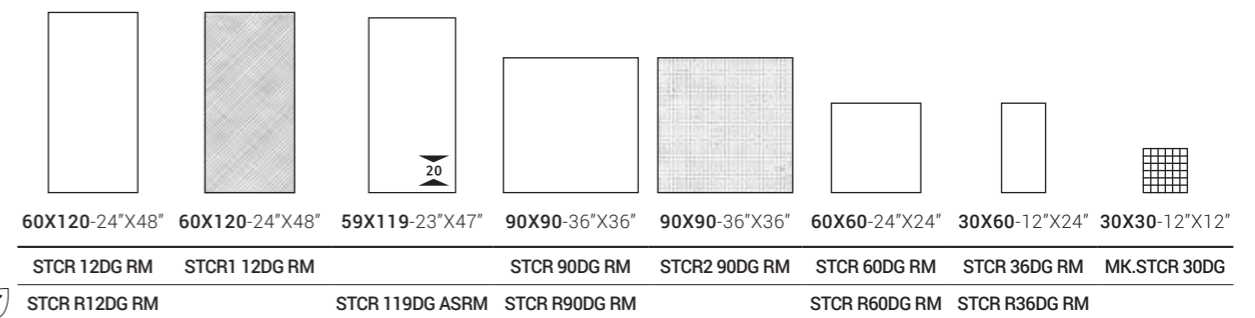
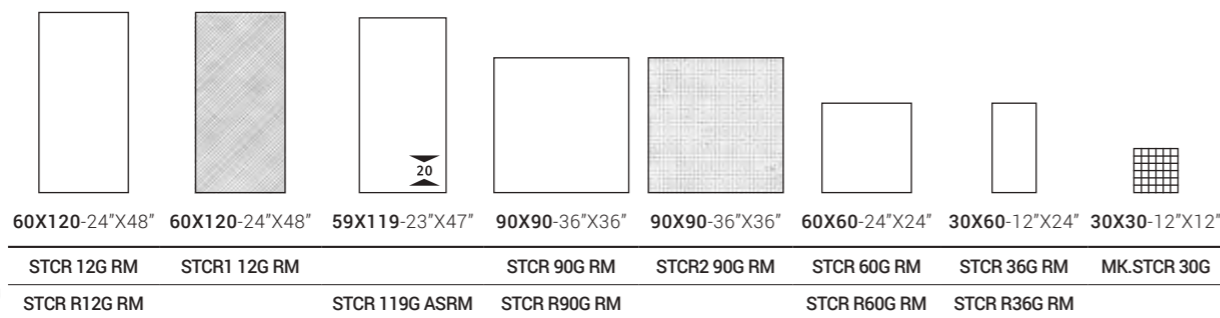


RAME L0,5X15 Δ
0,5X15-0,2"X6"

STCR DK36DG
30X60-12"X24"

G

DG



STONCRETE

GRES PORCELLANATO A MASSA COLORATA
COLOURED BODY PORCELAIN TILE

PEZZI SPECIALI / SPECIAL PIECES

	6X60-2.4"X24" △	6X90-2.4"X36" △	120X32,5-48"X12,8" △
CG	STCR BT60CG	STCR BT90CG	STCR G120CG
AG	STCR BT60AG	STCR BT90AG	STCR G120AG
G	STCR BT60G	STCR BT90G	STCR G120G
DG	STCR BT60DG	STCR BT90DG	STCR G120DG

	30X60-12"X24" △	20X60X4-8"X24"X2" △
CG	STCR S R60CG	STCR E R60CG
AG	STCR S R60AG	STCR E R60AG
G	STCR S R60G	STCR E R60G
DG	STCR S R60DG	STCR E R60DG

	59X119-23"X47" △	59X119-23"X47" △	59X119-23"X47" △
CG	STCR S119CG AS	STCR S59CG AS	STCR A119CGSXAS STCR A119CGDXAS
G	STCR S119G AS	STCR S59G AS	STCR A119G SXAS STCR A119G DXAS
DG	STCR S119DG AS	STCR S59DG AS	STCR A119DGSXAS STCR A119DGDXAS

CARATTERISTICHE TECNICHE SPECIFICHE / TECHNICAL FEATURES SPECIFICATIONS

	DIN 51130 (R)	DIN 51097 (A+B+C)	BCR REP. CEC 6/81		DM 14/6/89 N. 236		PENDULUM TEST BS (INGLESE)	PENDULUM TEST AS/NZS 4856:2004 (AUSTRALIANO)	PENDULUM TEST UNE ENV 12633:2003 (SPAGNOLO)	BOT 3000 (DCOF)
			G.A.	G.B.	C.A.	G.B.				
STCR	R10	A+B	>0.4	>0.4	>0.4	>0.4	>36	>35	2	>0,42
STCR1-2	R10	B+C	>0.4	>0.4	>0.4	>0.4	>36	>45	3	>0,42
STCR R	R11	B+C	>0.4	>0.4	>0.4	>0.4	>36	>45	3	>0,42
STCR AS	R11	B+C	>0.4	>0.4	>0.4	>0.4	>36	>45	3	>0,42







STCRWA 36AG RM / STCRWA1 36AG RM / STCRWA 36DG RM / STCR 60AG RM / STCR 60DG RM

BICOTTURA DA RIVESTIMENTO
DOUBLE-FIRED WALL TILE

ISO 13006 - G - BIII GL (E ≥ 10%) UNI EN 14411 - L

ST N ○



STCRWA 36CG RM
30X60-12"X24"



STCRWA 36AG RM
30X60-12"X24"



STCRWA1 36CG RM
30X60-12"X24"



STCRWA1 36AG RM
30X60-12"X24"



STCRWA2 36CG RM
30X60-12"X24"



STCRWA2 36AG RM
30X60-12"X24"

ST N ○



STCRWA 36G RM
30X60-12"X24"



STCRWA 36DG RM
30X60-12"X24"



STCRWA1 36G RM
30X60-12"X24"



STCRWA1 36DG RM
30X60-12"X24"



STCRWA2 36G RM
30X60-12"X24"



STCRWA2 36DG RM
30X60-12"X24"



STCRWA2 36CG RM












STCRWA1 36DG RM

Caratteristiche Tecniche Gres Porcellanato

Technical Specifications Porcelain Stoneware

UNI EN 14411 (ISO 13006) - Bla (appendice/appendix G)

CARATTERISTICA Specification	METODO DI PROVA Test methods	REQUISITI PREVISTI DALLA NORMA Requirements in accordance to the standards	VALORE MEDIO Average value
 DIMENSIONI E ASPETTO DIMENSIONS AND APPEARANCE	ISO 10545-2	PROSPETTO G.1 PROSPECT G.1	CONFORME COMPLIANT
 ASSORBIMENTO D'ACQUA WATER ABSORPTION	ISO 10545-3	≤ 0,5%	< 0,1%
 RESISTENZA A FLESSIONE FLEXURAL RESISTANCE		min./МИН 35 N/mm ²	> 45 N/mm ²
SFORZO DI ROTTURA MODULUS OF RUPTURE	ISO 10545-4	SPESSORE / THICKNESS ≥ 7,5 mm: min. 1300N	6,5 mm 1800 N* SPESSORE* / THICKNESS* 10 mm 3000 N* 20 mm 11000 N*
 RESISTENZA ALL'ABRAZIONE PROFONDA DEEP ABRASION RESISTANCE	ISO 10545-6	≤ 175 mm ³	< 140 mm ³
RESISTENZA ALL'ABRAZIONE SUPERFICIALE RESISTANCE TO SURFACE ABRASION	ISO 10545-7	CLASSI 0-5 CLASSES 0-5	COME INDICATO IN CATALOGO AS INDICATED IN THE CATALOGUE
 COEFFICIENTE DILATAZIONE TERMICA LINEARE (α) LINEAR EXPANSION THERMIC COEFFICIENT	ISO 10545-8	METODO DISPONIBILE AVAILABLE ON REQUEST	≤ 7x10 ⁻⁶ °C ⁻¹
 RESISTENZA AGLI SBALZI TERMICI RESISTANCE TO SUDDEN TEMPERATURE CHANGES	ISO 10545-9	METODO DISPONIBILE AVAILABLE ON REQUEST	RESISTE RESISTANT
 RESISTENZA AL GELO FROST RESISTANCE	ISO 10545-12	RICHIESTA ALWAYS TESTED	RESISTE RESISTANT
 PRODOTTI CHIMICI AD USO DOMESTICO ED ADDITIVI PER PISCINA HOUSEHOLD CHEMICALS AND SWIMMING POOL WATER CLEANSERS		min. B МИН. B	min. B МИН. B
ACIDI ED ALCALI A BASSA CONCENTRAZIONE ACIDS AND LOW CONCENTRATION ALKALIS	ISO 10545-13	DA LA, LB A LC FROM LA, LB TO LC	DA LA, LB A LC FROM LA, LB TO LC
ACIDI ED ALCALI AD ALTA CONCENTRAZIONE ACIDS AND HIGH CONCENTRATION ALKALIS		METODO DISPONIBILE AVAILABLE ON REQUEST	METODO DISPONIBILE AVAILABLE ON REQUEST
 RESISTENZA ALLE MACCHIE UGL STAIN RESISTANCE UGL		METODO DISPONIBILE AVAILABLE ON REQUEST	METODO DISPONIBILE AVAILABLE ON REQUEST
RESISTENZA ALLE MACCHIE GL STAIN RESISTANCE GL	ISO 10545-14	min. 3 МИН. 3	min. 3 МИН. 3

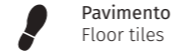
* VALORI RIFERITI AL FORMATO 60X60 / VALUES REFERRED TO 60X60 SIZE

Symbologia

Symbols

INDICAZIONI D'USO

INDICATIONS FOR USE



Pavimento
Floor tiles



Rivestimento
Wall tiles

DESTINAZIONI D'USO

SUGGESTED APPLICATIONS



Abitazioni
Domestic purpose



Commerciale leggero
Light commercial



Commerciale
Commercial



Esterni
Outdoor floor

SUPERFICI

SURFACES

Struttura
Structure



Strutturato
Slate cut

Finitura
Finish



Naturale
Natural

Aspetto superficiale

Surface look



Opaco
Matt

Bordo
Edge



RM Rettificato monocalibro
Monocaliber, rectified

STONALIZZAZIONE

SHADE VARIATION

V2

SPESSORE

THICKNESS

10 20

CARATTERISTICHE DI VENDITA

SALES CHARACTERISTICS



Prodotto venduto al pezzo.
Product sold per item.

Tutti i nostri prodotti, sia al mq che al pezzo, sono venduti unicamente a scatola completa.
All our products are sold only in complete boxes, whether the unit of measure is per item or per square metre.

Caratteristiche Tecniche Bicottura







Double Firing Technical Specifications

UNI EN 14411 (ISO 13006) - Bill (appendice L)



imolaceramica.com

Coordinamento
Marketing CC Imola

CARATTERISTICA Specification	METODO DI PROVA Test methods	REQUISITI PREVISTI DALLA NORMA Requirements in accordance to the standards	VALORE MEDIO Average value
 DIMENSIONI E ASPETTO DIMENSIONS AND APPEARANCE	ISO 10545-2	PROSPETTO L1 PROSPECT L1	CONFORME COMPLIANT
 ASSORBIMENTO D'ACQUA WATER ABSORPTION	ISO 10545-3	> 10%	> 10%
 RESISTENZA A FLESSIONE FLEXURAL RESISTANCE	ISO 10545-4	SPESSORE / THICKNESS ≥ 7,5 mm: min. 12 N/mm ² SPESSORE / THICKNESS < 7,5 mm: min. 15 N/mm ²	>17 N/mm ²
SFORZO DI ROTTURA MODULUS OF RUPTURE		SPESSORE / THICKNESS ≥ 7,5 mm: min. 600 N SPESSORE / THICKNESS < 7,5 mm: min. 200 N	CONFORME COMPLIANT
 COEFFICIENTE DILATAZIONE TERMICA LINEARE (A) LINEAR EXPANSION THERMIC COEFFICIENT	ISO 10545-8	METODO DISPONIBILE AVAILABLE ON REQUEST	≤ 7x10 ⁻⁶ °C ⁻¹
 RESISTENZA AGLI SBALZI TERMICI RESISTANCE TO SUDDEN TEMPERATURE CHANGES	ISO 10545-9	METODO DISPONIBILE AVAILABLE ON REQUEST	RESISTE RESISTANT
RESISTENZA AL CAVILLO CRAZING RESISTANCE	ISO 10545-11	RICHIESTA ALWAYS TESTED	RESISTE RESISTANT
 PRODOTTI CHIMICI AD USO DOMESTICO ED ADDITIVI PER PISCINA HOUSEHOLD CHEMICALS AND SWIMMING POOL WATER CLEANSERS		min. B МИН. В	min. B МИН. В
ACIDI ED ALCALI A BASSA CONCENTRAZIONE ACIDS AND LOW CONCENTRATION ALKALIS	ISO 10545-13	METODO DISPONIBILE AVAILABLE ON REQUEST	METODO DISPONIBILE AVAILABLE ON REQUEST
ACIDI ED ALCALI AD ALTA CONCENTRAZIONE ACIDS AND HIGH CONCENTRATION ALKALIS		METODO DISPONIBILE AVAILABLE ON REQUEST	METODO DISPONIBILE AVAILABLE ON REQUEST
 RESISTENZA ALLE MACCHIE STAIN RESISTANCE	ISO 10545-14	min. 3 МИН. 3	min. 3 МИН. 3

Symbologia

Symbols

INDICAZIONI D'USO

INDICATIONS FOR USE



Rivestimento
Wall tiles

DESTINAZIONI D'USO

SUGGESTED APPLICATIONS



Abitazioni
Domestic purpose

SUPERFICI

SURFACES

Struttura / Structure



Strutturato
Slate cut

Finitura / Finish



Naturale
Natural

Aspetto superficiale / Surface look



Opaco
Matt

STONALIZZAZIONE

SHADE VARIATION

V2



SPESSORE

THICKNESS

9,8



A brand of
Cooperativa Ceramica d'Imola S.c.

Via V. Veneto, 13
40026 Imola (BO) Italia
Tel. +39 0542 601601
Fax +39 0542 31749

