

WATERFRONT/

where the elements come together

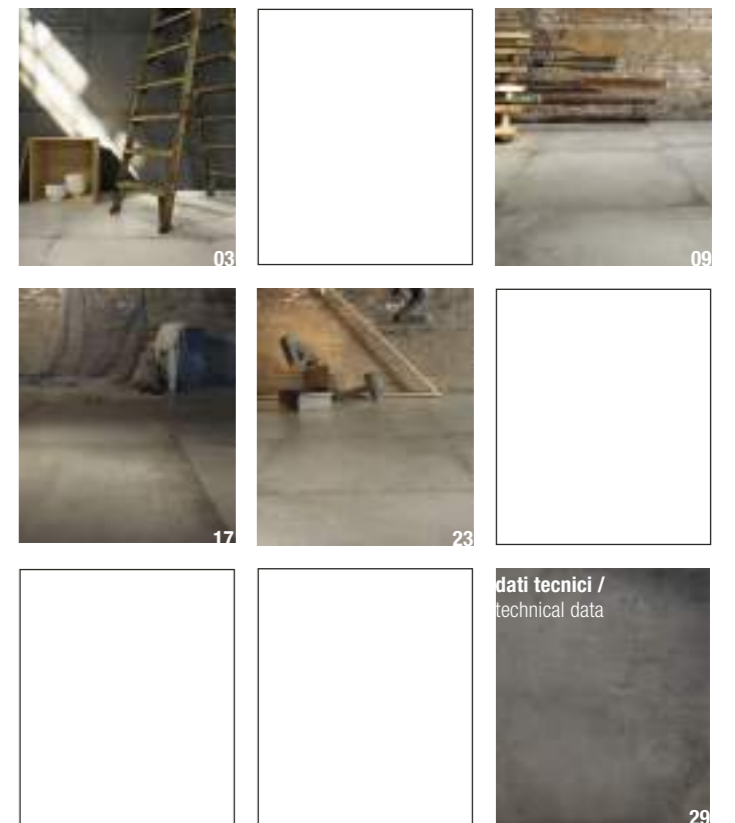
LEONARDO
EVOLUTIONSTILE



WATERFRONT/

dove gli elementi si incontrano

where the elements come together



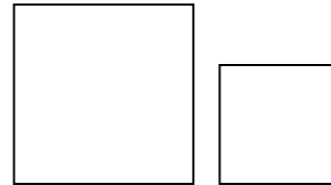
2 WATERFRONT/

Camaleontico nel suo essere contemporaneamente cotto e cemento. Due stili in un unico progetto, la tradizione e il calore del cotto che vive e condivide le proprie peculiarità con il cemento, minimal e moderno per eccellenza.

/ Waterfront marries the essence of fired tiles and cement. The two styles have been brought together in a single project: the tradition and warmth of fired tiles share their uniqueness with the minimal and modern look of cement.



Formati / Sizes
Formats / Formate
Formatos / Форматы / 规格



90X90 / 36"X36"

60X60 / 24"X24"

Superfici / Surfaces
Surfaces / Oberflächen
Superficies / Поверхности / 表面



Colori / Colours
Couleurs / Farben
Colores / Цвета / 颜色





Contaminazioni creative
Creative combinations



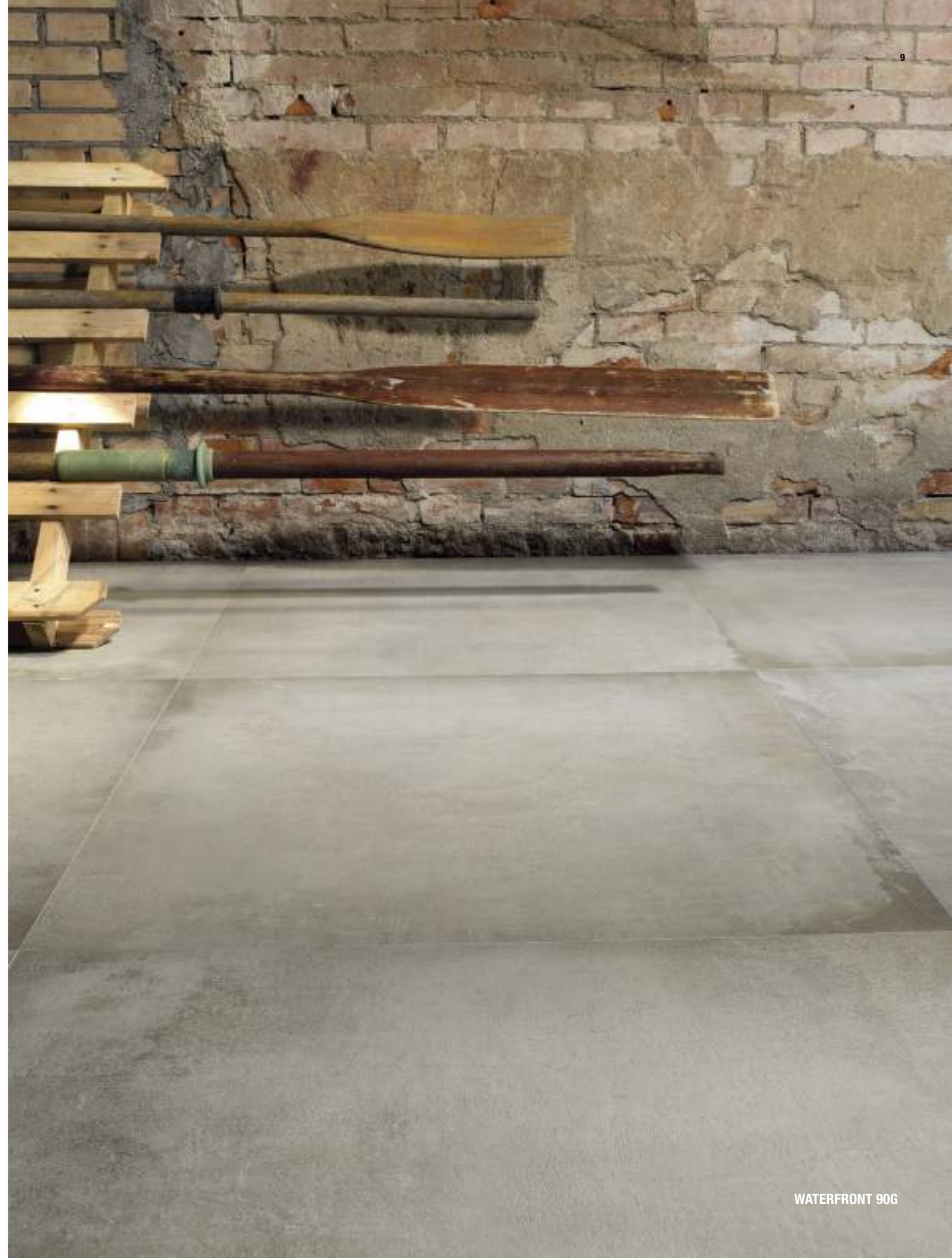
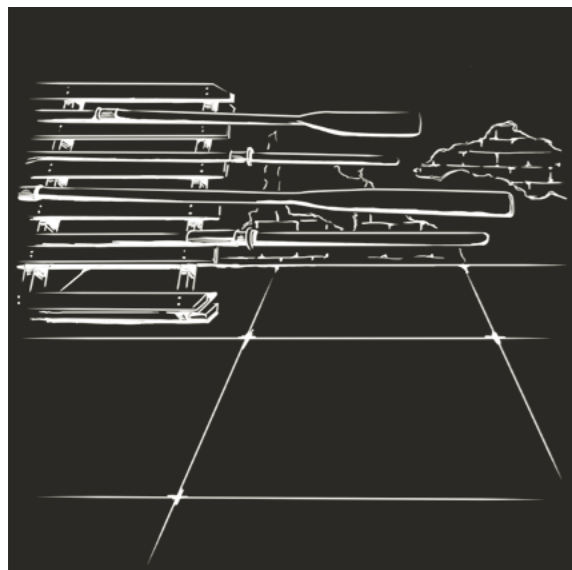


8 WATERFRONT/G

Waterfront inserisce nella gamma di Leonardo un progetto polivalente, contaminato ma al contempo moderno e in linea con gli ultimi trend.



/ Waterfront enriches the Leonardo range with a versatile project that is classic and modern at the same time, in line with the latest trends.





Contaminazioni creative
Creative combinations



WATERFRONT 90G



WATERFRONT 90G



WATERFRONT 90G



MK.WATERFR.30G

16 WATERFRONT/CP

La gamma cromatica presenta nuance fortemente attuali come il colore cappuccino e il grigio.



/ The colours available, such as cappuccino and grey, reflect contemporary tastes.





Contaminazioni creative
Creative combinations





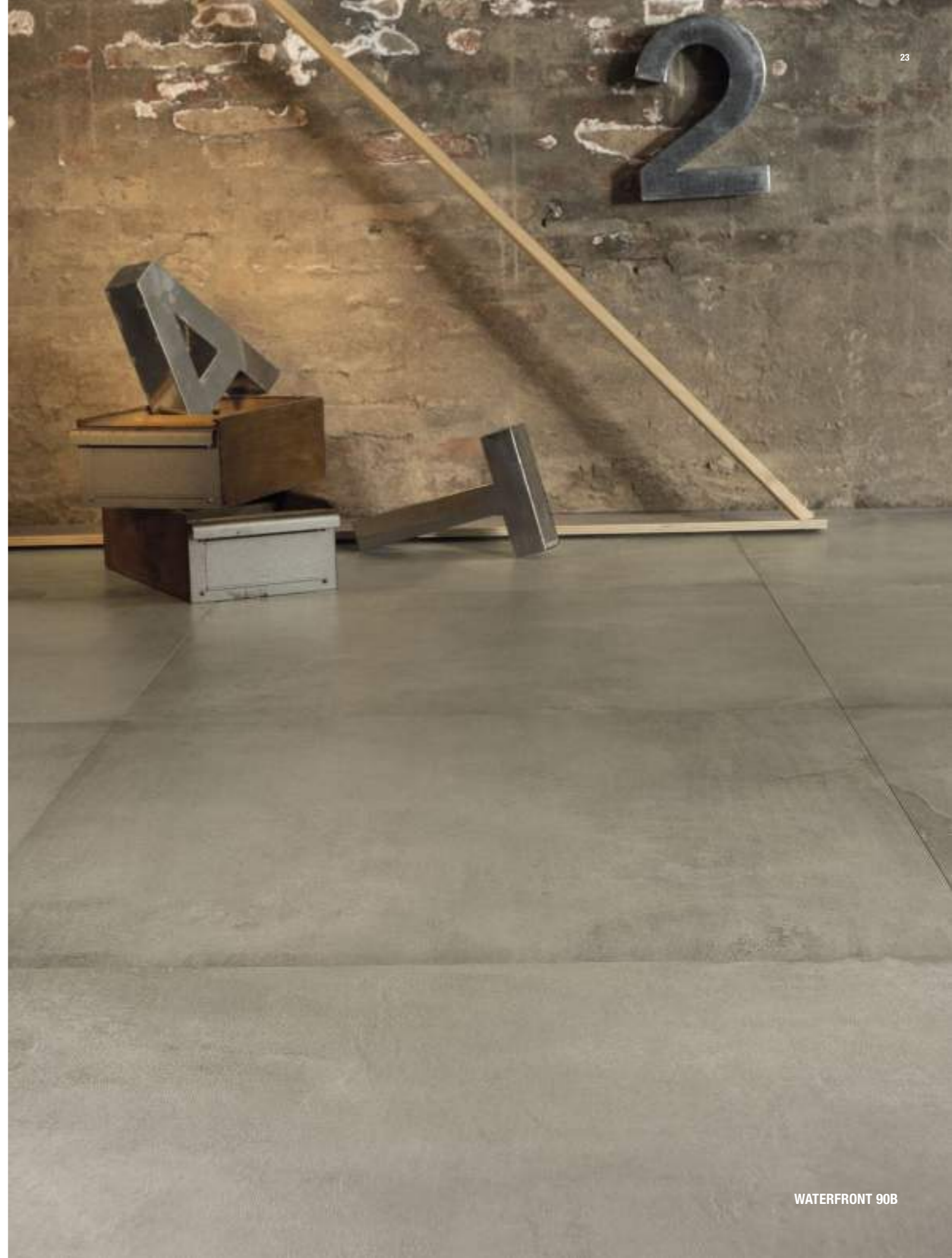
22 WATERFRONT/B

Una dicotomia avvincente che riveste gli ambienti di uno stile modernamente classico ed essenziale.

Nei timbri più chiari, l'essenza cotta prevale su quella del cemento, nei timbri più scuri accade il contrario, generando superfici fortemente essenziali.



/ A captivating dichotomy that lends spaces a classic and essential style with a modern twist. In the lighter colours the essence of the fired tiles dominates the essence of the cement, whilst in the darker colours the opposite occurs.





Contaminazioni creative
Creative combinations





WATERFRONT 90B

WATERFRONT 90B



28 WATERFRONT/

Gres porcellanato a massa colorata / Coloured body porcelain tile / Grès cérame teint dans la masse / Eingefärbtes Feinsteinzeug
 Gres porcelánico coloreado en masa / Керамогранит, окрашенный в массу / 彩胎瓷质砖

ISO 13006 - G - Bla (E ≤ 0,5%) UNI EN 14411 - G -



WATERFRONT B

WATERFRONT CP

WATERFRONT W

WATERFRONT G



90X90
36"X36"



60X60
24"X24"

	WATERFRONT B	WATERFRONT 90B	WATERFRONT 60B
	WATERFRONT CP	WATERFRONT 90CP	WATERFRONT 60CP



90X90
36"X36"



60X60
24"X24"

	WATERFRONT W	WATERFRONT 90W	WATERFRONT 60W
	WATERFRONT G	WATERFRONT 90G	WATERFRONT 60G

30 WATERFRONT/

Gres porcellanato a massa colorata / Coloured body porcelain tile / Grès cérame teint dans la masse / Eingefärbtes Feinsteinzeug
 Gres porcelánico coloreado en masa / Керамогранит, окрашенный в массе / 彩胎瓷质砖

ISO 13006 - G - Bla (E ≤ 0,5%) UNI EN 14411 - G -



WATERFRONT N



Elementi decorativi / Decorative elements / Éléments décoratifs / Dekorations-Elemente
 Elementos decorativos / Декоративные элементы / 装饰元素



MK.WATERFR.30B
30X30 / 12"X12"



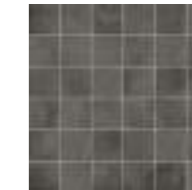
MK.WATERFR.30CP
30X30 / 12"X12"



MK.WATERFR.30W
30X30 / 12"X12"



MK.WATERFR.30G
30X30 / 12"X12"



MK.WATERFR.30N
30X30 / 12"X12"



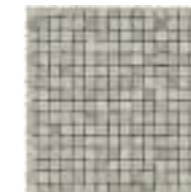
MK.WATERFR.B
30X30 / 12"X12"



MK.WATERFR.CP
30X30 / 12"X12"



MK.WATERFR.W
30X30 / 12"X12"

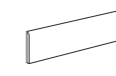


MK.WATERFR.G
30X30 / 12"X12"



MK.WATERFR.N
30X30 / 12"X12"

Pezzi speciali / Trims / Pièces spéciales / Sonderstücke
 Piezas especiales / Специальные элементы / 特制件



6X60 ▲
2.4"X24"



60X32,5 ▲
24"X12.8"

WATERFRONT B	WATERFR. BT60B	WATERFR. G60B
WATERFRONT CP	WATERFR. BT60CP	WATERFR. G60CP
WATERFRONT W	WATERFR. BT60W	WATERFR. G60W
WATERFRONT G	WATERFR. BT60G	WATERFR. G60G
WATERFRONT N	WATERFR. BT60N	WATERFR. G60N



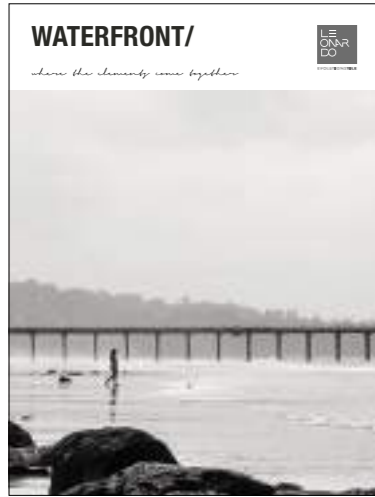
90X90
36"X36"



60X60
24"X24"

WATERFRONT N	WATERFRONT 90N	WATERFRONT 60N
---------------------	----------------	----------------

ARTICOLO	DIN 51130 (R)	DIN 51097 (A+B+C)	BOT 3000 (DCOF)	BCR REP.CEC 6/81		DM 14/6/89 N.236	
				g.a.	g.b.	c.a.	g.b.
WATERFRONT CP	R9	A	> 0,42	> 0,4	> 0,4	> 0,4	> 0,4
WATERFRONT B							
WATERFRONT W							
WATERFRONT G							
WATERFRONT N							



DESIGN & COORDINAMENTO
Marketing CC IMOLA

COPERTINA / COVER
Foto di / Photo by
Paolo Crocenzi

STAMPA / PRINT
golinelli communication lab

Indicazioni d'uso

Indications for use / Instructions d'utilisation
Anwendungsbereich / Indicaciones de uso
Указания по использованию / 使用说明



Pavimento

Floor tiles
Sol
Boden
Piso
Пол
地板



Rivestimento

Wall tiles
Revêtement
Wand
Revestimiento
Облицовка
墙面

Destinazioni d'uso

Suggested applications / Destination
Anwendungsbereich / Lugar de empleo
Предназначение / 用途



Abitazioni

Domestic purpose
Habitation
Wohnbereich
Habitación
Жилые помещения
住宅



Esterni

Outdoor floor
Extérieur
Aussenbereich
Exterior
Наружные части
户外



Commerciale leggero

Tiles for light commercial traffic area
Passage léger
Gewerblichen bereich
Pequeña superficie comercial
Торговое помещение с легкой нагрузкой
低流量商业



Commerciale pesante

Tiles for heavy traffic area
Passage intense
Gewerblichen bereich mit hoher beanspruchung
Grande superficie comercial
Торговое помещение с высокой нагрузкой
高流量商业



Commerciale pesante spessorato

Heavy commercial high thickness
Commercial intense forte épaisseur
Industrie bereich
Commercial pesado espesorado
Торговое помещение с очень высокой нагрузкой
垫层高流量商业

Finitura

Finish / Finition
Oberfläche / Acabado
Отделка / 终加工



Naturale

Natural
Naturel
Natur
Matt
Природный
自然式



Lappato

Honed
Adouci
Anpoliert
Esmenillado
Полуполированный
磨砂式



Levigato

Polished
Poli
Poliert
Pulido
Полированный
磨光



Patinato

Patinated
Patiné
Patinato
Glaseada
Патинированный
上釉

Aspetto superficiale

Surface look / Aspect superficiel
Aussehen der Oberfläche / Aspecto superficial
Внешний вид / 表面外观



Opaco

Matt
Mat
Matt
Опак
亚光



Satinato

Satin finish
Satiné
Mattiert
Satinado
Сатиновый
丝光式



Semilucido

Semi-glossy
Semi-brillant
Halbglänzend
Semibrillante
Полуглянцевый
半抛光



Lucido

Glossy
Brillant
Glänzend
Brillante
Глянцевый
抛光

Struttura

Structure / Structuré
Struktur / Estructura
Структура / 结构



Liscio

Smooth
Lisse
Glatt
Liso
Гладкий
光滑



Strutturato

Slate cut
Structuré
Strukturiert
Estructurado
Структурированный
结构式



Bocciardato

Bush-hammered rustic
Rustique bouchardé
Rustikal scharriert
Rústico bujardado
Рустикальный обтесанный бучардой
粗荔枝面

Bordo

Edge / Bord
Rand / Borde
Кромка / 边缘



Dritto

Straight
Droit
Gerade
Derecho
Прямой
直线型



Sagomato

Shaped
Profilé
Geformt
Perfilado
Фасонный
成形



Burattato

Tumbled
Vieilli
Getrommelt
Tomboleado
Галтовка
滚磨



Rettificato monocalibro

Monocaliber, rectified
Rectifié monocalibre
Rectifiziert monokaliber
Rectificado monocalibre
Ректифицированный монокальбр
单尺寸研磨式

Modulare

Modular / Modulaire
Modul / Modular
Модульный / 模块式



Modular X mm
Modulaire X mm
Modul X mm
Modular X mm
Модульный X mm
模块式 X mm

Stonalizzazione

Shade variation / Variation de nuances
Schattierung / Destonalización
Разброс цветового тона / 石展化



v1



v2



v3



v4

Caratteristiche di vendita

Sales characteristics / Conditions particulières de vente
Vertriebsigenschaften / Características de venta
Характеристики продажи / 销售特点

▲ **Prodotto venduto unicamente a scatola intera.** Il prodotto non identificato con tale simbolo è da considerarsi in vendita al Mq. / Product sold only in complete boxes. If the product is not marked with this symbol it should be considered as sold by m². / Produit vendu par boitage entier uniquement. En l'absence de ce symbole, le produit peut être vendu au m². / Der Artikel wird nur in vollen Kartons verkauft. Ohne dieses Symbol wird er pro qm verkauft. / El producto se vende exclusivamente por cajas. Los productos que no están marcados con este símbolo se venden por m². / Продукт продается только целыми коробками. Продукт, не обозначенный данным символом считается продаваемым квадратными метрами. / 产品只可按整盒出售。没有带此符号的产品表示按照平方米出售。

△ **Prodotto venduto al pezzo** / Product sold by piece / Produit vendu à la pièce / Stückpreisverkauf / Producto vendido por unidades / Продукт продаваемый поштучно / 此产品按个出售



EVOLUTIONSTILE

leonardoceramica.it

A brand of
Cooperativa Ceramica d'Imola S.c.

Via V. Veneto, 13
40026 Imola (BO) Italia
Tel. +39 0542 601601
Fax +39 0542 31749
